

PEACEHAVENPLAYERS

Theatre Group

PRESENT

T H E

W O W

F A C T O R

BY JUDITH FOOT

OFFICIAL PROGRAMME

14TH & 15TH JUNE 2013

MERIDIAN CENTRE PEACEHAVEN



J. Wagstaff Co

Established 1911

Independent Family Owned Estate Agents
Sales & Lettings

227 South Coast Road, Peacehaven, BN10 8LB
01273 582277

Est. 1911

J. WAGSTAFF

Funeral Directors



Serving the Community for 100 years

- Golden Charter Pre-Payment Plans
- Private Chapels
- Horse Drawn and Woodland Funerals
- Home Visits Arranged

Well established family business • Personal service
advice and understanding • 24 hours a day

PEACEHAVEN
231 South Coast Road

(01273) 582188

SALTDEAN
7A Longridge Avenue

(01273) 303065

BRIGHTON
29 College Place

(01273) 603013

WELCOME...

Hello and welcome to the Peacehaven Players 2013 production of The Wow Factor!

This summer we are delighted to be performing a completely brand new show that has been written and directed by one of our very own members, **Judith Foot**. Judith has had a tough job not only writing and directing a great show but also acting in it, so we hope you enjoy all her hard work as much as we have enjoyed it up on stage.



Looking to the future, there are new beginnings ahead as we run up to our annual general meeting, and we see some changes to our committee. After 10 years in one position or another, and following a really enjoyable year as Chairman, I am stepping down from the committee completely, giving our other eager, younger members the opportunity to take over the running of Peacehaven Players. We also say goodbye to **Chris Jenner** as social secretary, **Sarah Holman** from publicity and **Danny Rainsford** as secretary. We'd like to thank them all for their hard work and dedication, and we all look forward to watching the new committee flourish and take the Peacehaven Players forward, continuing to produce great shows for you, our wonderful audience, whilst having a brilliant time ourselves.

The Peacehaven Players truly is nothing without the people who dedicate their time to it, and as such we are always looking for new members and for people to get involved. If you've enjoyed our production today and you'd like to find out more then visit our website at www.peacehavenplayers.co.uk. In addition you can find us on Facebook, so for more information or to let us know your thoughts on the show, visit www.facebook.com/peacehavenplayers.

Alternatively, why not speak to one of our front of house team today who can tell you everything you need to know.

All that's left to say is we hope you enjoy the show!

Jim Jenner

(Chairman)

DIRECTORS NOTES

Hello and welcome to Peacehaven Players production of The Wow Factor.

In fact, it is the only production of The Wow Factor you can presently see, as it has never been performed before!

The concept for The Wow Factor was born after a Summer of watching X-Factor and Britain's Got Talent, but I wanted to make my show funny and down to earth, so what better setting than a sleepy village in the South of England! I



started writing the plot in September 2012 and created a part for every member of the Peacehaven Players! The story revolves around a village hall committee who decide to hold their own singing competition, based on a popular TV programme of the time, however events quickly spiral out of control when instructions are misconstrued and the show is advertised all over the country as the 'real thing'.

This is the first play I have written and I have had great fun with it, I hope you find the characters as real as I do, and laugh at their little idiosyncrasies. Of course, it is the actors themselves who bring the characters to life and I would like to thank the cast for their belief in me and all their hard work in making this show possible. In particular I would like to thank **Georgina Bancroft**, my Assistant Director, whose organisational skills are second to none and who has been on hand to help throughout. Thanks to my choreographers; **Georgina Bancroft**, **Mandie Fairhall** and **Danny Rainsford**, who have put together some fabulous dance routines, and to **Josh Winstone**, MD, for teaching all 20 songs and bringing out the very best in all of us. My thanks also go to **Michele Harden** and her team for the scenery and to **Chris Jenner** and her team for the sparkly curtain and specialist costumes.

In closing I would just like to thank my family who have been my rock, but especially to my youngest son **Daniel** (Jack Grey) whose encouragement at the outset and his continued support made this happen.

I hope you enjoy The Wow Factor!

Judith Foot

(Author and Director)

Peacehaven Players Present

THE **WOW** FACTOR

STARRING (In order of appearance)

Maddie Grey/ Bonnie Liscious	Sarah Holman
Jack Grey	Daniel Foot
Jenny Grey/ Sarah Dallinger	Mandie Fairhall
Lucy/ Alyona	Claire Mullan
Scarlet/ Fiona Cox	Amy Garbo
Arthur McLintock	Jim Jenner
Tom the Caretaker/Elvis/Daniel	Nigel Enever
Verity Carmichael	Georgina Bancroft
Sonia Danville	Judith Foot
Peter Danville	David Whatman
Emma	Susanna Battman
Katie	Pia Rose Wilmott
Eve	Sophie Chadwick
Members of the Youth Group	Sarah Harden
	Daniella Battman
	Leanne Battman
Julian	Daniel Rainsford
Sylvia	Christine Twibill
Mary	Wendy Clare
Betty	Lynne Holman
Kath	Maureen Bywaters
Dot	Patricia Tuckett
Daphne Maplin	Tony Garwood
Bob Dove	Mark Rushton

**ALSO STARRING THE HARLEQUIN DANCERS AS
THE LESSER MOULDERING SCHOOL OF PERFORMING ARTS**

Akshaya Selvaraju

Alice Tobin

Chloe Harwood

Elysia Wild

Emily Blake

Emma Woodgate

Leah Brown

May Wells

Sapphire Martin

Sophia Turner

Tegan Simon

Choreographed By:

Charlotte Williams

Janice Turner

Zoey Dean



Ballet
Modern
Contemporary
Tap
Jazz
Latin
Ballroom
Street
Disc
Dram

Harlequin Studios

Est: 1973

The number one dance and drama studio in Peacehaven, Sussex

IDTA dance exams & LAMDA drama exams

Adult classes available

Pupils prepared for festival work

Dance & drama classes available for all
ages & abilities

www.harlequinstudios.co.uk

01273 581742

PRODUCTION

Technical Manager	Michele Harden
Stage Manager	Michele Harden
Set Design	Michele Harden
Lighting	Mike Medway
Sound	Dave Stening
Wardrobe	Chris Jenner
	Maureen Bywaters
	Pat Tuckett

CREDITS

Director	Judith Foot
Assistant Director	Georgina Bancroft
Production Coordinator	Tony Garwood
Musical Director	Joshua Winstone
Choreography	Georgina Bancroft
	Daniel Rainsford
	Mandie Fairhall
Band	Joshua Winstone
	Mikey Parsons
Front of House	Front of House Team
Script By	Judith Foot
Programme By	Sarah Holman

MUSICAL NUMBERS

Act One

"I Wore My Coat"	Jack with Maddie, Lucy and Scarlet
"Send In The Clowns"	Sonia Danville
"One"	The WI
"Razzle Dazzle"	The WI and Youth Group
"Holding Out For A Hero"	Jenny Grey
"Barbie Girl"	Bonnie Liscious
"The Shoop Shoop Song (It's In His Kiss)"	Mary and The Marriots
"Move It"	Elvis
"We Will Rock You"	The Head Bangers
"Hit Me Baby One More Time"	Julian
"Annie's Song"	Peter Danville
"Two Little Boys/Daisy"	Arthur McLintock
"Jar Of Hearts"	Maddie Grey
"Marry You"	Jack Grey

MUSICAL NUMBERS

Act Two

"Endless Love"	Peter and Sonia Danville
"I'm In The Mood For Dancing"	Mary and the Marriots
"Rolling In The Deep"	Julian
"Ego"	The Head Bangers
"We Are Family"	Jenny, Jack and Maddie Grey"
"Fame"	Whole Company
"I Wore My Coat (Reprise)"	Jack, Lucy and Company

ACT ONE

- Scene 1** The Grey's Kitchen
- Scene 2** First Meeting of The Village Hall
Committee
- Scene 3** Meeting of The Youth Group
- Scene 4** WI Jumble Sale
- Scene 5** Second Meeting of The Village Hall
Committee
- Scene 6** The Lesser Mouldering School of
Performing Arts
- Scene 7** Verity and Julian's Meeting
- Scene 8** Making the Glitters
- Scene 9** The Danville's Home
- Scene 10** The Wow Factor Rehearsals
- Scene 11** The Wow Factor Act One

ACT TWO

Scene 1

Backstage Refreshments

Scene 2

The Wow Factor Act Two

Scene 3

Backstage Shenanigans

Scene 4

The Wow Factor Continues

Scene 5

The After Show party

PRESENTING...

Amy Garbo - Scarlett/Fiona Cox



Amy joined the Players in 2005, playing in Snow White. Her first main part was as Erma in Anything Goes. She says, *"I love being a part of the panto, acting makes me come out of my shell more from being a shy person. I've made loads of new friends from the group, and it's a great place to drink tea and have a gossip about my love of Hollyoaks and rubbish tv!"*

Chris Jenner - Front of House

Chris first joined the Players in 2001 for her first show Aladdin. Although she doesn't get involved onstage, she's been roped in to do almost everything else! She says, *"Peacehaven Players is my husband Jim's hobby, I just came along to see what went on! I'm not quite sure how I ended up here 11 years later. I enjoy being at Peacehaven Players because it's a really good fun and social group."* We might succeed in getting Chris to join us onstage one day - she was once part of Roy Castle's cabaret act!



Christine Twibill - Sylvia

Christine has been with the Players since 2004, when she appeared in her first show Blitz. She says, *"The most enjoyable thing about being a member of players is meeting like-minded people - we all get on so well. I also like doing the fund raising events, the coffee mornings are great fun. I mainly love to sing, I really enjoy it and it always makes me happy."*



THE PLAYERS

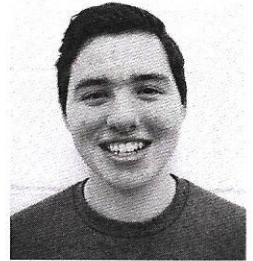


Claire Mullan - Lucy/Alyona

Claire first joined Peacehaven Players as a junior in 2002 in Oliver, and then joined as an adult in 2010 for The Wiz. Her first main part was playing Snow White. She says, *"The best thing about Players is without a doubt the people. I've made some lovely friends. Acting is my absolute passion, it's what I want to do in life and therefore I'm pursuing my dream to become a professional actor, having already taken part in paid professional acting jobs."*

Daniel Foot - Jack Grey

Dan has been a member of the Players since 2005, in his first show Snow White, where he played the dwarf Idduno. Dan says, *"The best part of being in Players is having fun with my friends. Acting has always been a passion of mine so it's great to be able to do it on a regular basis."* Acting isn't Dan's only talent, he's currently studying Biology, Chemistry, Politics and Psychology at A level!



Danny Rainsford- Julian

Danny joined the Peacehaven Players in 2011, for his first show Snow White, in which he had his first main part as Slurp. He says, *"I like being at Players because it's very sociable and I've made some fantastic friends. I love acting because it's so much fun to entertain and it's something so different from my usual working day. It's a great challenge to become someone else and make others believe in a character."* When he's not onstage Danny is a nurse at the Royal Sussex and he'd like to one day specialise in end of life care. He also admits he's way too obsessed with American TV programme Glee!



PRESENTING...

David Whatman - Peter Danville



David is a recent returning member to the Peacehaven Players, having directed and appeared in many previous Peacehaven Players productions. The Wow Factor is his first show since returning. He says, *"I began performing with the Brighton Gang Shows, and since then have been an active member of many local societies, including Brighton Theatre Group, Southwick Opera, HHOS and of course Peacehaven Players. Having played various different roles it's great to be back at Players, and I'm very much looking forward to being a part of this great production of The Wow Factor"*.

Georgina Bancroft - Verity Carmichael

Georgie has been a member of Peacehaven Players since 1998, with her first role as the good witch in The Wizard of Oz. She says, *"I love the sense of belonging to a great amdram group and all of us working towards putting on the best show possible. I have loved acting since I was very young - which is a long time ago now! It has given me such pleasure over the years and I have met many interesting people and a wonderful group of friends. One of my favourite roles has been playing the bad witch in panto - I loved the sheer feeling of power, but I'm not sure what that says about me!"*



Jim Jenner - Arthur McLintock

Jim has been a member of Peacehaven Players since 2001, performing in his first show Aladdin. He says, *"The best thing about being a member of the Players is being a part of a team and meeting new friends. I just love being on stage and sharing my acting experiences with others through directing shows. Although it may not be a favourite of others, I really enjoy auditioning for new parts!"*



THE PLAYERS



Joshua Winstone - Musical Director

Josh recently joined the Players in 2012, for his first show Showstoppers. He says, *"Unlike other groups, Peacehaven Players feels like family – I know that whenever I go I will always be welcome. It's also a place of hard work and everyone pulls together to provide the best results. My passion for musical direction stems from my love of teaching people to sing and play instruments to the best of their ability, hopefully enjoying themselves and producing the best performance for the paying public."* Despite his young age Josh has a lot of experience as an MD, performing in shows including Little Shop of Horrors, Annie, Grease, The Wiz.

Judith Foot - Director/Sonia Danville

Judith first joined Peacehaven Players in 2001, for Trial by Jury, with her first main role in Dick Whittington. She says, *"I love performing onstage, whether it's acting, singing or dancing, and being at Players has also given me the chance to direct. I have been singing all my life, starting off with my guitar in nursing and old people's homes before successfully auditioning for Brighton Schools Choir at 11, which led to me spending a season in Joseph and the Technicolor Dreamcoat at the Theatre Royal. I joined Brighton Theatre Group in 1979 and in 1996 I began studying opera, joining Opera Viva as a soloist 2 years later"*.



Lynne Holman - Betty

Lynne's first show was Beauty and the Beast, and her first main role is as Betty in The Wow Factor! She says, *"The opportunity to meet new, like-minded people is great and they quickly become friends. Joining the Players was my first time acting on stage but once I started I caught the acting bug! I've always enjoyed watching shows in London and locally, so to be in one myself is definitely a new and exciting experience"*



PRESENTING...

Mandie Fairhall - Jenny Grey/Sarah Dallinger



Mandie has been with the Players since 1999, appearing in her first show *Sleeping Beauty*. Her first main role was in *Dick Whittington*. She says, *"The reason I love being a member is getting the chance to sing and act, it's my absolute passion! I also love the social aspect of it, and being around friends doing something we love."* Mandie is unique because she has played the part of the pantomime dame not only once but twice, and let's face it, it's not easy being a woman playing a man playing a woman!

Mark Rushton - Bob Dove

Mark first joined the Players in 2008, for his first show *Anything Goes*. His first main part was as Nurse Neralgia. He says, *"Players is great for meeting new friends and being part of a team – I love letting my alter ego loose! Being a member of Players has given me the opportunity to see both sides of theatre, having been onstage as well as crew for many shows, and there's nothing like the joy and buzz of a show, especially the adrenaline burst on opening night!"* Mark also stage manages for other local groups, and he was introduced to the Peacehaven Players by his father-in-law.☺



Maureen Bywaters - Kath



Maureen is one of our longest serving members, having joined at the very beginning of the group in 1997, and appearing in our first show, *The Boyfriend*. She says, *"I love the social side of the Players as well as taking part in shows. I have always liked singing and acting but was too busy with my children until later on, when I had the time to finally join a company. Since joining I've also been involved with scenery and wardrobe, which is great as I love getting stuck into some sewing."* Outside of Players Maureen enjoys gardening as well as art, making some fabulous homemade cards for the whole group!

THE PLAYERS

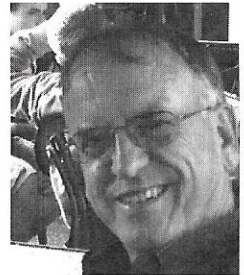
Michele Harden - Technical Director



Michelle first joined the Players in 2010, and her first show was as crew for *The Wiz*. However, she hasn't escaped the singing and acting, having appeared in our previous show *Showstoppers*. She says, *"Joining Players has been a great chance to design and paint scenery on a large scale, and I love the joy of seeing my ideas come to life. There's nothing quite like the satisfaction of a job well done! The friendship and support at Players is great. I've learnt so much and have developed my painting and design skills - I hope to be involved for years to come!"*

Nigel Enever - Tom the Caretaker/ Elvis/ Daniel

Nigel has only recently joined the Players, and *The Wow Factor* is his first show. He says, *"The best thing about being in Players is the skills I've learnt, from acting and dancing to projecting my voice. It's a great change for me to be playing someone else and taking on other characteristics when as a musician I'm usually just being myself. I relish the sense of satisfaction when all our hard work in rehearsals pays off"*. As well as acting Nigel is a musician, playing support to the likes of John Mayall, Mick Taylor and Peter Green in the 60s, and playing to over 800 people at the Guildford Civic Hall in 2003.



Pat Tuckett - Dot

Pat first joined the Players in 2005 and her first show was *Sinbad the Sailor*. Her first main part was in *The Wiz*, playing Dorothy's Aunt Em. Pat says, *"The most enjoyable part of being a member of Players is that it gives you a chance to be someone else, and taking part in shows is a great way to forget life's troubles for a while. I'm mostly in the chorus but I'm also a member of the wardrobe team, which is great as I like to sew!"*



PRESENTING...



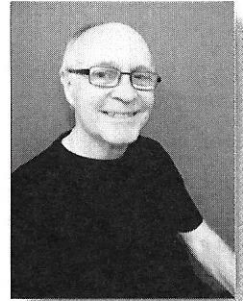
Sarah Holman - Maddie Grey/ Bonnie Liscious

Sarah joined the Players in 2010 for her first show, Aladdin. Her first main part was in 2011 as Dorothy in The Wiz. She says, *"I first joined the Players to gain some confidence, but also because I've always loved acting and singing. Musical theatre gives me a real buzz, and there's nothing quite like the adrenaline rush and nerves on opening night. I love going to the West End to see shows and my favourite is Wicked, so it was a real highlight to sing songs from it in one of our previous shows. The greatest thing about joining Players has been the people I've met, I've made some friends for life!"*

Tony Garwood - Daphne Maplin

Tony joined us in 2012 for his first show – Showstoppers. His first main role was as Alphonse in Beauty and the Beast. He says, *"The most enjoyable thing about being a member at Players is getting the chance to act! I have always enjoyed becoming someone else and giving enjoyment to others. I like working with others to create something special. Everyone is so very friendly here, you feel right at home from your first meeting".*

Tony is no stranger to the world of theatre. He has previously played the lion in The Wizard of Oz, as well as Fagin in Oliver Twist. He has also been involved "behind the scenes", directing performances of Aladdin, Jack and the Beanstalk, The Wizard of Oz and Guys and Dolls.



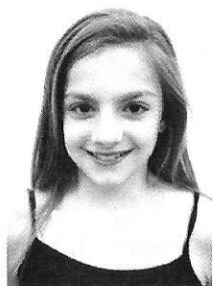
Wendy Clare - Mary

Wendy has been with the Players since 2002, when she appeared in her first show Kiss Me Kate. Her first main role was as a naughty policewoman in Dick Whittington. She says, *"Being in Players encourages us to expand our own experiences and I have had the opportunity to get involved with so many different activities, including set design and construction, make up, costumes, and directing/ producing. As well as the opportunities, I also really enjoy the social aspect of Players, and I really like doing the coffee mornings and other fundraisers."*



THE PLAYERS

Our Junior Cast



ABOUT PEACEHAVEN PLAYERS...

Peacehaven Players are a musical theatre group who aim to stage two shows a year, a major summer production and a pantomime in the winter. The group was officially formed in January 1998, with just 8 members, increasing to a massive 48 by the time of our first show "The Boyfriend" in April of the same year.

GET INVOLVED!

We are an open company and new members are always welcome. Not an actor? We still want to hear from you. Peacehaven Players offers something for everyone, from working backstage to front of house, painting scenery, props, making costumes, or even just general help, there's always something for you to get involved in! For the budding actors among us, everyone is welcome to get up on stage!

Our main aim for the Peacehaven Players is, of course, to have fun. It's of utmost importance that we enjoy what we do, but it's not all about the acting! There's a great social side to being a member of the Players. We run regular fund raising events such as coffee mornings and car boot sales, which is a great way to get to know everyone and meet even more members of the community. We also try to get together for meals and nights out for the chance to socialise outside of rehearsals.

If you'd like to get involved, or you'd like to know more, don't hesitate to ask one of our front of house team for more information.

Alternatively you can visit our website – www.peacehavenplayers.co.uk or visit our Facebook page – www.facebook.com/peacehavenplayers.

ABOUT PEACEHAVEN PLAYERS...

Peacehaven Players are a musical theatre group who aim to stage two shows a year, a major summer production and a pantomime in the winter. The group was officially formed in January 1998, with just 8 members, increasing to a massive 48 by the time of our first show "The Boyfriend" in April of the same year.

GET INVOLVED!

We are an open company and new members are always welcome. Not an actor? We still want to hear from you. Peacehaven Players offers something for everyone, from working backstage to front of house, painting scenery, props, making costumes, or even just general help, there's always something for you to get involved in! For the budding actors among us, everyone is welcome to get up on stage!

Our main aim for the Peacehaven Players is, of course, to have fun. It's of utmost importance that we enjoy what we do, but it's not all about the acting! There's a great social side to being a member of the Players. We run regular fund raising events such as coffee mornings and car boot sales, which is a great way to get to know everyone and meet even more members of the community. We also try to get together for meals and nights out for the chance to socialise outside of rehearsals.

If you'd like to get involved, or you'd like to know more, don't hesitate to ask one of our front of house team for more information.

Alternatively you can visit our website – www.peacehavenplayers.co.uk or visit our Facebook page – www.facebook.com/peacehavenplayers.

PREVIOUS SHOWS

1998

THE BOYFRIEND | LONDON TOWN | CINDERELLA

1999

FIDDLER ON THE ROOF | STEPPING OUT | SLEEPING BEAUTY

2000

CALAMITY JANE | THAT'S ENTERTAINMENT | WIZARD OF OZ

2001

HELLO DOLLY | TRIAL BY JURY | ALADDIN

2002

KISS ME KATE | DICK WHITTINGTON

2003

OLIVER | VARIETY SHOWTIME | JACK & THE BEANSTALK

2004

OKLAHOMA | BABES IN THE WOODS

2005

BLITZ | A NIGHT AT THE MUSICALS | SNOW WHITE

2006

MY FAIR LADY | ROBINSON CRUSOE

2007

RADIO TIMES | CINDERELLA

2008

ANYTHING GOES | SLEEPING BEAUTY

2009

THANK YOU FOR THE MUSIC | LITTLE BO PEEP

2010

CHART TOPPERS | ALADDIN

2011

THE WIZ | SNOW WHITE

2012

SHOWSTOPPERS | BEAUTY & THE BEAST

OUR PATRONS

Peacehaven Players would like to express our sincere thanks to our loyal patrons who have supported us over the years. Our current patrons are:

TERRY BYWATERS

SUE FAIRHALL

CHRIS FAIRHALL

ROGER TANT

ELSIE TANT

As a community group the support we receive from you, our audience members, and our patrons is vital for the future of the Peacehaven Players. If you have enjoyed our shows and would like to show your support without becoming an active member, then why not become a patron?

Becoming a patron gives you the benefits of free tickets, concessions, a regular newsletter, and a sneak peak at shows and "behind the scenes" action at special rehearsal evenings.

For an application form, or for more information please see our front of house team, or contact us on 01273 681861.

We would like to once again thank you for supporting the Peacehaven Players.

OPEN AUDITIONS

Peacehaven Players are delighted to present Cinderella this Christmas.

For this forthcoming production we are holding

OPEN AUDITIONS on the 9TH JULY 2013.

Everyone is welcome - you don't need any previous experience.

For more information be sure to speak to one of our Front of House team today, or you can call us for more information on **01273 582198.**

We look forward to seeing you there!

By Arrangement with Stage Right Creative Ltd
PEACEHAVENPLAYERS
PRESENT Theatre Group

Cinderella
By Alan P Frayn

**4TH -7TH
DECEMBER 2013**

**MERIDIAN CENTRE
PEACEHAVEN**

www.peacehavenplayers.co.uk

By Arrangement with Stage Right Creative Ltd

PEACEHAVENPLAYERS

PRESENT Theatre Group

Cinderella

By Alan P Frayn

4TH - 7TH
DECEMBER 2013

MERIDIAN CENTRE
PEACEHAVEN

www.peacehavenplayers.co.uk